



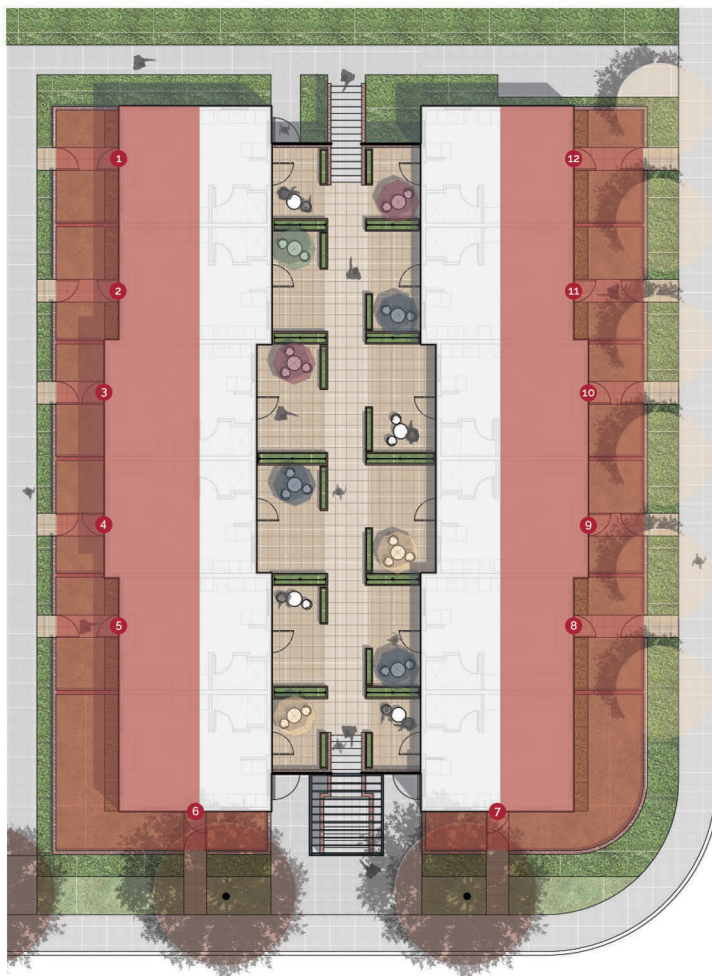
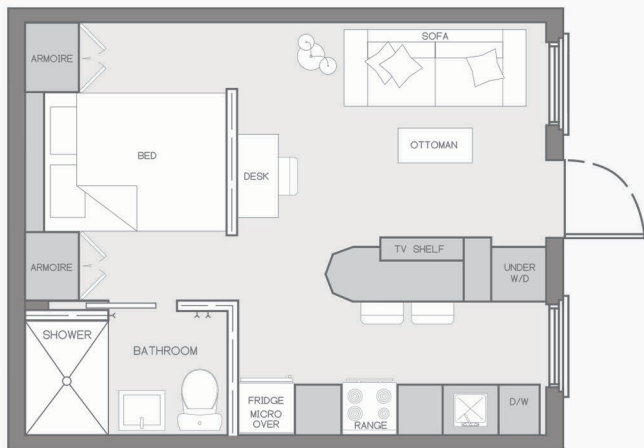
| 2127 ETHEL STREET

Scale Down to Experience More

We believe that thoughtful planning can change the way you experience a home. Our micro homes have been designed with mindful diligence, resulting in efficient configuration for optimal living.

| MICRO A GROUND LEVEL

- Full size modern kitchen with built in breakfast bar.
- Full size fridge, stove/oven, microwave, and dishwasher.
- Permanent queen size bed.
- Full 4ft shower with glass doors.
- Ample amount of seamlessly integrated storage space, including a built-in dresser.
- Combination of washer & dryer all in one elegant unit.
- Our ground floor units feature a small courtyard at grade with Synlawn turf and 2ft x 6ft planters.



This is a strictly non-smoking building and pets are not allowed. Water is included, but tenants pay for electricity, internet, and cable. A Lease Agreement will be required.